

# PENNARD PLAYING FIELDS

## SATURDAY 11 JULY

### CARNIVAL PROGRAMME £2.00

(ADMITS ONE ADULT-CHILDREN UNDER 12 FREE)

# PENNARD

2015

# CARNIVAL

## WEEKEND



[www.pennardcarnival.org.uk](http://www.pennardcarnival.org.uk)

# EVERYBODY IS WELCOME TO JOIN IN THE FUN



Specialist advice on:

- Financial Planning for Business Owners
- Investment & Pensions Management
- Mortgages & Life Assurance

*Please call to arrange a complimentary consultation*

6 Southgate Road, Southgate, Swansea SA3 2BT

tel: 01792 234875 fax: 01792 230081 email: info@cilbenrick.co.uk

www.cilbenrick.co.uk



**LOCAL FOCUS AND FOLK**

## **Pennard Carnival: Many hands make lots of fun for everyone**

What makes the Carnival is the effort and creativity of everyone that takes part and turns up on the day, building floats, dressing up and all having smiling faces and a lot of fun. For this to happen it takes a lot of preparation to prepare the stage for our community Carnival and more importantly we need the support on the day with volunteers to help in any number of ways, from putting up gazebos to manning the gates and running games. It's all good fun, very sociable and makes the Carnival the unique event we all love.

**CONTACT US (JULIAN: 07973 642 809) to play a part in keeping this longstanding community event going for future generations.**

If you have any suggestions or feedback on the Carnival then please pop the form below into the box at the Caravan next to the Show Ring.

Name: \_\_\_\_\_

Telephone: \_\_\_\_\_

Comments: \_\_\_\_\_  
 \_\_\_\_\_  
 \_\_\_\_\_  
 \_\_\_\_\_  
 \_\_\_\_\_

I would like to Help by...  
 \_\_\_\_\_  
 \_\_\_\_\_  
 \_\_\_\_\_

## **NEUADD Y PLWYF PENNARD PARISH HALL**



The hall is available for hire for:

- Regular bookings
- Parties (great rates and weekday availability)
- Anniversary parties
- Funeral wakes
- Any other one off event
- Theatrical performances and concerts

**There are two halls and a fully equipped kitchen.**

**Please consider supporting your Parish Hall**

**To book ring Wally Richards  
01792 233467**





# Preventing Legal Problems

Peter Lynn  
& PARTNERS

Solicitors

Proudly supporting our local community



For legal advice you can trust...

- Divorce & Family Matters
- Disputes
- Wills, Trusts & Probate
- Sports Law
- Tax Saving Schemes
- Partnership / Shareholder Issues
- Personal Injury
- Business Premises
- Buying & Selling Property
- Employment Law

Call us today to arrange your free  
30 minute consultation on 01792 450010

SWANSEA  
2nd Floor, Langdon House  
Langdon Road  
Swansea SA1 8QY  
Tel: 01792 450010  
Fax: 01792 461881

MUMBLES  
87 Newton Road  
Mumbles  
Swansea SA3 4BN  
Tel: 01792 369303  
Fax: 01792 447887

MORRISTON  
109 Clase Road  
Morrleston  
Swansea SA6 8DY  
Tel: 01792 310731  
Fax: 01792 310871

PONTARDAWE  
21 Holly Street  
Pontardawe  
Swansea SA8 4ET  
Tel: 01792 863633  
Fax: 01792 863693

YSTRADGYNLAIS  
41 Heol Eglwys  
Ystradgynlais  
Swansea  
SA9 1EY  
Tel: 01639 842709

WWW.PETERLYNNANDPARTNERS.CO.UK

Email: info@plandp.co.uk



## THE CARNIVAL POEM

Our sleepy little village  
Has so much going on,  
Stories, scandal even more  
Where does this news come from?

New builds appearing everywhere  
Homes fit for a king,  
I've heard a little rumour  
The Windsors are moving in.

The Eastcliff Eden project  
National Trust just beware,  
Not gently domed and beautiful  
Steel framed and very square.

We've even got the premier league  
Living not too far,  
Perhaps one night we'll meet him  
Propping up the bar!

So sad our little post office  
Has had to close its doors.  
But looking on the brighter side  
It's now in Pennard stores.

The services at Pennard stores  
Are improving day by day,  
With ice cream, Punch and Judy  
shows, And catering for ebay!

Let's find the hooded culprit  
Who's damaged the Premier Shop,  
Together we will catch him  
And hand him to a cop.

A problem we must try to solve.  
Should the cows be free to roam  
Or should they be securely kept  
In the owners farmyard home?

Our club may soon be open  
To the public far and wide,  
Arriving by the bus load  
Will there be enough room inside?  
I've heard the Wind street clubbers  
Are looking for a venue,  
Somewhere quiet and rural  
With a reasonable menu!

A problem with a certain lane is  
causing quite a fuss.  
Reversing cars and traffic,  
No room to turn a bus.

To our new golf professional,  
Sean Pearson,  
We wish you all the best  
I hear you have a superstar  
Better than all the rest  
With so many winning titles -  
(Tiger), watch your back.  
Callum, you have done so well  
Surely right on track.

A newly painted Beaufort pub  
Is looking very bright.  
But where have all the flowers gone?  
Not a single one in sight.

The library just has to stay  
A book can't be replaced  
By technology and kindles  
Don't close it down in haste.

If you need a cut and colour  
Alison's the best to see.  
Forty years experience  
And a reasonable fee.

PLEASE volunteer, help our carnival  
to Live on for years to come.  
To The Men's Society  
who will retire soon  
Our thanks to them and everyone.

Many thanks to everyone  
For making this day GREAT  
Finish off your beers  
And head towards the fete

That's it folks, before I go,  
A little tip to share  
'Keep your secrets to yourself'  
Or I may just be there.

NORTH WIND  
STUDIO  
SOUTHGATE



With paintings from  
Gower to Antarctica,  
Greenland to  
the Alps,  
Rowan Huntley is a  
local artist who's  
travelled far!  
see

www.rowanhuntley.co.uk  
or call me  
on 07761 233 733  
to arrange a visit.



**SWANSEA**  
BUILDING SOCIETY

The personal touch for  
savings & mortgages  
from your local  
Building Society



**‘Customers First’ is our priority**

We pride ourselves on our ‘face to face’ approach,  
which is well received by all our customers

**MUMBLES BRANCH**

496 Mumbles Road, Swansea SA3 4BX • 01792 365980 • [www.swansea-bs.co.uk](http://www.swansea-bs.co.uk)

# strength

## IN NUMBERS



**matthews & co**  
chartered accountants

[www.matthewsandco.co.uk](http://www.matthewsandco.co.uk)





## THE DAYS' EVENTS SATURDAY 11th July



**12.00pm SAMBA TAWE ON KITTLE GREEN**  
**-12.30pm**

**LEAVES @ 1.00pm MAIN PROCESSION (FLOATS)**  
**AT NATIONAL TRUST/PENNARD STORES**

**2.00pm EVENTS COMMENCE ON THE FIELD**

### MAIN RING EVENTS OF THE DAY WILL INCLUDE:

- Samba Tawe
- Circus Eruption Display & Workshops
- Starstruck Performing Arts School Display
- Scruffs Novelty Dog Show (Bring along your dog)

### SIDE SHOWS GALORE INCLUDING:

- Bouncy Castles – for Children Big & Small
- Street Runners show area
- Pirate Ship, Skittles
- Rides & Face Painting
- All the usual side stalls – Gower Bays and many more

### REFRESHMENTS IN ABUNDANCE

- Refreshment Tent - WI cakes and drinks
- Hot food, Ice Creams, Bar (soft & alcoholic drinks with draft Beer and Cider)

## 4.00pm SCRUFFS NOVELTY DOG SHOW

Bring along your Dog, pedigree or mongrel. A class for everyone. Rosettes for winners & runners-up.



The Route will be closed to traffic 12.30pm to 2.00pm on Saturday 11 July

## SPECIAL EVENTS

Tickets available from Pennard Stores, Southgate or Premier Shop, Pennard 50p surcharge for credit cards

**FRIDAY 10th From 8.00pm (£FREE) @ The Southgate Club**

**FAMILY NIGHT** BAR FOOD AVAILABLE

With Music in the Lounge

**FRIDAY 10th 7.30pm (Tickets £6.00) @ Pennard Community Hall**

**THREE CLIFFS IN HARMONY CHOIR**  
**with Loughor Town Band**

Drinks Available. All proceeds in aid of Pennard Library

**SATURDAY 11th 8.00pm–12.30am (Tickets £5.00)**

**EVENING BASH**

MARQUEE WITH BAR & HOT FOOD

**JoeSchmo** PROVIDE LIVE MUSIC

Supported by



**SUNDAY 12th 10.30am all welcome**

**GOWER CHURCHES TOGETHER**

A service in the Marquee at Pennard Playing Fields

As part of our community weekend everyone is welcome to this special service from *Gower Churches Together*.



Pennard Carnival Supports Recycling, please help by putting your rubbish in the allocated Bins while enjoying the events... Thank You

The Carnival Committee would like to thank everyone involved for their help, without our community pitching in together The Carnival wouldn't happen... well done.

[pennardcarnival.org.uk](http://pennardcarnival.org.uk)



Straight-talking  
solicitors

straightforward  
legal advice

**For over six decades, we have been successfully combining innovative legal expertise with a commitment to excellence and long-term relationships underpinned by a strong ethical position.**

Discover from the range of services we offer how we can help you achieve your individual and organisational goals.

for a free first meeting email [bjd@djm.law.co.uk](mailto:bjd@djm.law.co.uk)  
or phone us on 01792 65 00 00

Douglas-Jones Mercer SOLICITORS

16 Axis Court, Mallard Way, Swansea Vale, Swansea SA7 0AJ

[www.djm.law.co.uk](http://www.djm.law.co.uk)

## PENNARD PLAYING FIELD NEW PAVILION “Buy a Brick” Scheme

The old pavilion was built in the 1970's and now no longer meets the needs of sports groups, or the community and requires continual expensive repairs. The new pavilion will provide additional facilities for the use of all members of the community especially Pennard's very successful youth group. Besides good changing and shower facilities there will be a small kitchen to provide refreshments for sports and other recreational activities.



Planning permission has been given and the Community Council is raising funds to pay for the work. There are several trusts that support such ventures and we will apply for funding, but most require match funding. One of the fundraising schemes is a buy a brick scheme in which members of the community can purchase bricks for £5 each. **Please email - [Pennardcommunitycouncil@gmail.com](mailto:Pennardcommunitycouncil@gmail.com) for a form**

**Premier**  
Amazing Value Locally

### Convenience Store & Off Licence

Off Licence

Fresh Milk

Fresh Meat

Cold Drinks

Lottery

Mobile Top-ups

Ice Cream

Confectionery

Fresh Fruit & Veg

### LINKSIDE STORES

Tel: 01792 234112  
37 Linkside Drive,  
Pennard SA3 2BR

Opening Hours  
Mon/Sat 7:30am – 8:00pm  
Sun 8:00am – 6:00pm





**Carnival Queen**  
Annica Von Mantripp



**Prince Charming**  
Seth Lewis-Reed



**Rose Queen**  
Eva Middleton



**Attendant**  
Manon Lythgoe



**Attendant**  
Macey Hopkins



**Attendant**  
Isabelle Hill



**Attendant**  
Evangeline Roberts



**Attendant**  
Mia Dixon



**Attendant**  
Lucy Burton

# CARNIVAL ROYALTY

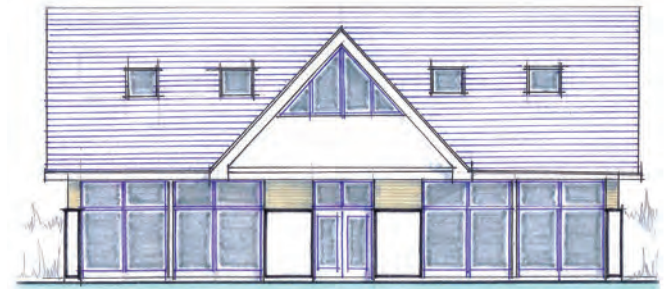


Friends of Pennard Library  
Cyfeillion Llyfrgell Pennard

## Friends of Pennard Library (FoPL)

On 31st March 2015, FoPL submitted a letter of application to the City and County of Swansea for the lease of the current library site. We are still pursuing officers for a response to this letter.

Once we have obtained the lease, we can continue to apply for grants to have the library rebuilt. Many thanks to the carnival committee for donating some of the profits from this year's carnival to the Friends of Pennard Library. Thank you also to the community for its continued support.



To find out more about what we have achieved so far, please go to: [www.fopl.org.uk](http://www.fopl.org.uk) We can also be found on Facebook: **Friends of Pennard Library**

**Squiggles**  
DAY NURSERY

The best quality of care for your child in a homely & stimulating environment

FREE pick up service from all primary schools in the SA3 area including Cila, Llwynderw & Crwys Primary Schools

Fresh meals prepared and cooked daily

No appointment necessary, we encourage parents to pop in at any time of day.

**Opening Times:**  
7.30am - 6.00pm  
Monday - Friday

Call us today:  
**01792 230 247**

[www.squigglesnursery.com](http://www.squigglesnursery.com)

Squiggles Day Nursery,  
Pennard Road, Pennard, Swansea SA3 2AD  
E-mail: [info@squigglesnursery.com](mailto:info@squigglesnursery.com)



# kPa Consulting Engineers Limited



Structural & Civil Engineering  
Design Consultancy

Gower based award winning  
Chartered Engineers.  
Providing engineering services to  
residential and commercial clients.

T: 01792 455077  
E: mail@kpaconsulting.co.uk

Henbury Cottage  
Southgate Road  
Southgate  
Swansea  
SA3 2BT

www.kpaconsulting.co.uk



We pride ourselves on  
being able to offer a  
comfortable home with  
privacy, independence,  
fulfilment, respect and  
equality integral parts of  
our care philosophy.



1 Westcliff, Southgate, Swansea, SA3 2AN  
T: 01792 233328 E: elaineowen8@aol.com

## The Southgate *Come and join us*



The Southgate has been in the village  
community for almost a century. This  
converted cowshed is now a friendly,  
comfortably refurbished bar and lounge  
run by Sheila and Andrew, who always  
look forward to meeting new visitors and  
members.

Outside Seating Area - Family Friendly Environment - Realistic Prices



Soft Drinks, Tea, Coffee and Cakes

Daily Bar Meals and Snacks - Traditional Sunday Lunches



Draught Beers and Local Real Ales - Range of Lagers, Wines and Spirits



**You can be sure of a warm welcome**

The Southgate, 15 Southgate Road, Southgate SA3 2BT

☎ 01792 233136 ☎

<http://www.thesouthgate.co.uk>



## Pennard Golf Club

The Links in the Sky

### The all round golfing experience

- Professional coaching for all levels of golfer
- Beginner sessions available
- Restaurant open to all
- Weddings & special occasions

01792 233131 • sec@pennardgolfclub.com • www.pennardgolfclub.com

## COFFEE SHOP

Three Cliffs



**Proud winners of Best Café**  
Swansea Bay Tourism Awards

*Treat yourself...*

Opposite the National Trust car park,  
68 Southgate Road, Southgate, Gower, Wales SA3 2DH  
01792 233230/233885 | [www.threecliffs.co.uk](http://www.threecliffs.co.uk)







# THE VOLVO V40 T2 ES

**£179 DEPOSIT**  
and  
**£179 PER MONTH\*\***

on Personal Contract Hire. 8,000 miles per annum with a 48 month agreement and excess mileage charges apply.



# THE VOLVO V40 T2 R-DESIGN

**£199 DEPOSIT**  
and  
**£199 PER MONTH\*\***

on Personal Contract Hire. 8,000 miles per annum with a 48 month agreement and excess mileage charges apply.

## FRF VOLVO

Valley Way, Swansea Enterprise Park, Swansea SA6 8QP

[WWW.FRFBVOLVO.CO.UK](http://WWW.FRFBVOLVO.CO.UK)

**01792 310999**

Official fuel consumption for the Volvo V40 T2 R-Design (manual) in MPG (l/100km): Urban 41.5 (6.8), Extra Urban 62.8 (4.5), Combined 53.3 (5.3). CO<sub>2</sub> Emissions 124g/km.

MPG figures are obtained from laboratory testing intended for comparisons between vehicles and may not reflect real driving results. Payments are including VAT at 20%. \*\*Important Information: Personal Contract Hire. 18's & over, subject to status. You will not own this vehicle. Vehicle must be returned in good condition to avoid further charges. Excess mileage charges 19.08p per mile. Subject to availability at participating dealers for vehicles registered 01/01/15 to 30/06/15. Not available with other promotions. Provided by Lex Autolease Ltd trading as Volvo Car Leasing, SK3 0RB.